

PRODUCT CATALOGUE

Gutter Mesh Supplies



KARBEN
INDUSTRIES



Gutter & Vermin Protection

Karben Industries offers a complete range of gutter guard and solar panel protection products to both domestic and international markets.

www.karben.com.au

Contents

About us	03
Gutter mesh specifications	04
Gutter mesh specifications (cont)	05
Ember guard specifications	06
Product compliance	07
Gutter guard accessories	08
Colour range	09
Tile roof kits	10
Corro roof kits	11
Trimdek roof kits	12
Klip-lok roof kits	13
Installation instructions	14
Installation instructions (cont)	15
Features and benefits	16
Gutter guard photo gallery	17
Solar panel mesh specifications	18
Solar panel protection kits	19

Karben Industries is proudly Australian owned and operated



ABOUT US

Karben Industries Pty Ltd is a proudly Australian owned and operated family company based on the Central Coast of New South Wales. Karben Industries offers a complete range of gutter guard and solar panel protection products to both domestic and international markets.

OUR TEAM

Managing Director	Ben Stewart
Accounts Manager	Karen Stewart
Business Development Manager	Trent Owen
Warehouse & Manufacturing Manager	Nathan Mezzino

Over time Karben Industries has emerged as the industry leader. With combined industry experience of more than 50 years our support staff all share a common focus. "Unmatched quality and service"

QUALITY

With all products manufactured to precise and proven specifications, we are proud to offer a range of meshes and accessories of unparalleled quality. All orders are individually packaged and distributed from our manufacturing and warehouse facility at Wyong.

An investment in sheet metal machinery and tooling in 2012 enabled Karben Industries to bring in house the production of gutter guard fitting accessories (trims and saddles) and become completely self-reliant. All our components are produced using premium 0.55BMT Australian made BlueScope Colorbond® steel.

SERVICE

All Karben Industries products are available individually or in convenient, ready to use kit form.

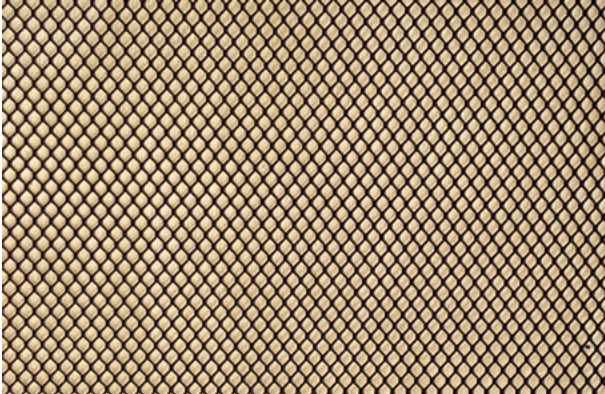
Interstate orders received by 12pm, will be dispatched the same day. For Sydney Metropolitan, same day delivery is available for orders placed before 8am. Orders placed after 8am will be delivered the next day. Otherwise, pickups are welcome from 8am till 4pm weekdays.

Our warehouse address is Unit 1, 3 Palm Tree Road Wyong NSW 2259



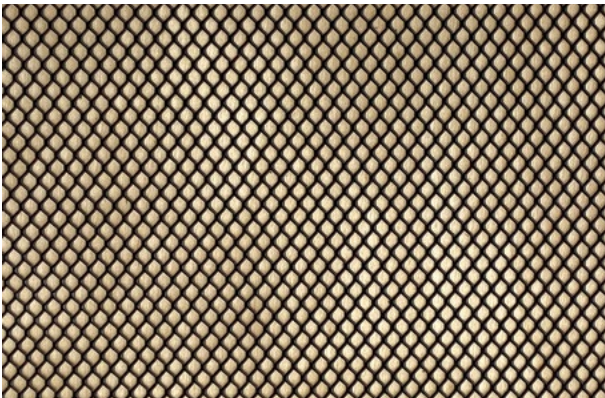
PRODUCT RANGE & SPECIFICATIONS

Premium Aluminium Gutter Mesh (500 g/m²)



- Powder coated, expanded, commercial grade aluminium
- Compatible with Colorbond®, Aluminium and Zincalume roof/gutters
- Aperture of 4mm x 3mm, mesh weight 500 g/m²
- Strand width 1mm, strand thickness 0.5mm
- Manufactured in 1000mm x 50m continuous rolls
- Standard widths of 250, 500, 750 & 1000mm
- Sold by the metre
- Compliant with AS 3959-2018 "Construction of buildings in bushfire prone areas"
- Suitable for use as Gutter Guard BAL-12.5, BAL-19, BAL-29, BAL-40 & BAL FZ
- Available in a huge range of colours

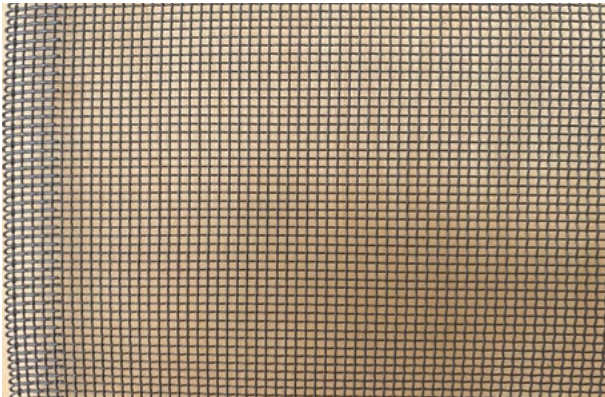
Heavy Aluminium Gutter Mesh (700 g/m²)



- Powder coated, expanded, commercial grade aluminium
- Compatible with Colorbond®, Aluminium and Zincalume roof/gutters
- Aperture of 4mm x 3mm, mesh weight 700 g/m²
- Strand width 1mm, strand thickness 0.7mm
- Manufactured in 1000mm x 50m continuous rolls
- Standard widths of 250, 500, 750 & 1000mm
- Sold by the metre
- Compliant with AS 3959-2018 "Construction of buildings in bushfire prone areas"
- Suitable for use as Gutter Guard BAL-12.5, BAL-19, BAL-29, BAL-40 & BAL FZ
- Available in 6 colours

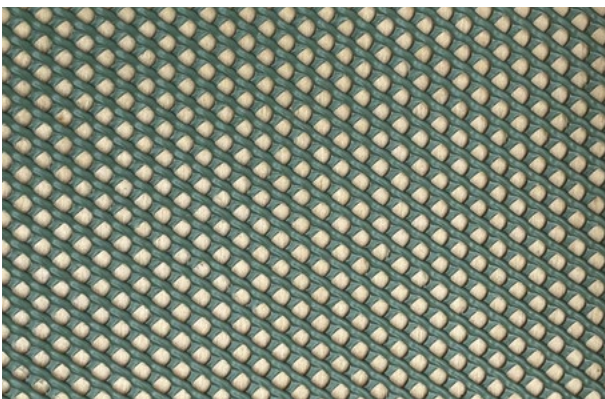
PRODUCT RANGE & SPECIFICATIONS

Woven Aluminium 1.9mm Gutter Guard (510 g/m²)



- Powder coated, woven, commercial grade aluminium
- Compatible with Colorbond®, Aluminium and Zincalume roof/gutters
- Aperture of 1.9mm x 1.9mm with locked manufactured edge
- Strand thickness 0.5mm, mesh weight 510 g/m²
- Compliant with AS 3959-2018 "Building in bushfire prone areas"
- Suitable as gutter guard in BAL-12.5, BAL-19, BAL-29, BAL-40 & BAL FZ
- Manufactured in 250mm, 500mm and 750mm in rolls of 30m
- 1000mm wide woven aluminium
- Sold by the metre
- Available in a wide range of colours

High Density Poly-Ethylene Gutter Mesh (650 g/m²)

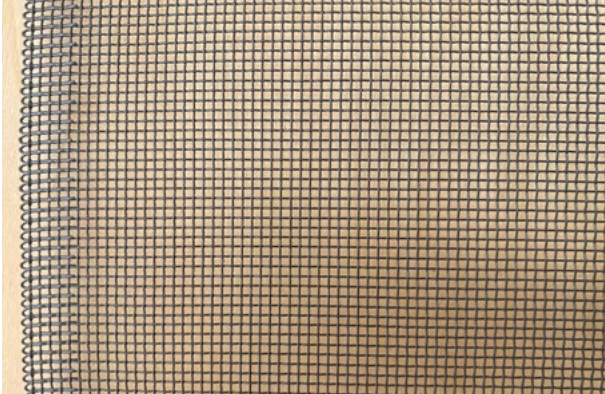


- 100% virgin High Density Poly-Ethylene
- UV stabilised material used in a range of commercial and domestic industries
- Compatible with all roof/gutter materials including copper and stainless steel
- Aperture of 4mm x 4mm, strand width 2mm, mesh weight of 650 g/m²
- Manufactured in 1000mm x 50m continuous rolls
- Standard widths of 250mm, 500mm, 750mm & 1000mm
- Sold by the metre
- Available in a range of modern and traditional colours



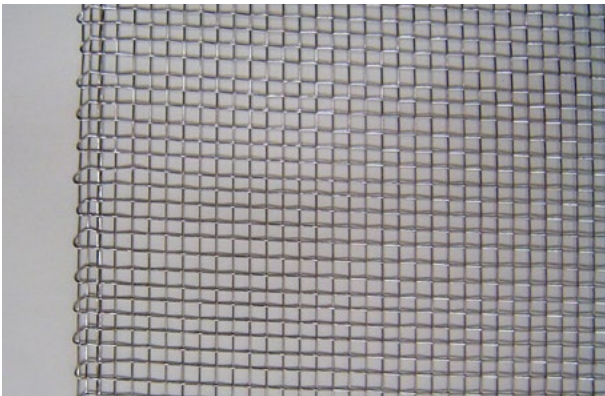
RANGE & SPECIFICATIONS

Woven Aluminium 1.9mm Ember Guard (510 g/m²)



- Powder coated, woven, commercial grade aluminium
- Compatible with Colorbond®, Aluminium and Zinalume roof/gutters
- Aperture of 1.9mm x 1.9mm with locked manufactured edge
- Strand thickness 0.5mm, mesh weight 510 g/m²
- Compliant with AS 3959-2018 "Building in bushfire prone areas"
- Suitable as Ember Guard in BAL-12.5, BAL-19, BAL-29
- Manufactured in 250mm, 500mm and 750mm in rolls of 30m
- 1000mm wide woven aluminium
- Sold by the metre
- Available in a wide range of colours.

Stainless Steel 1.9mm Ember Guard (520 g/m²)



- Marine grade-316 stainless steel woven mesh
- Aperture of 1.9mm x 1.9mm with selvedge manufactured edge
- Strand thickness 0.5mm, mesh weight 520 g/m²
- Compliant with AS 3959-2018 "Building in bushfire prone areas"
- Suitable for use as Ember Guard BAL-12.5, BAL-19, BAL-29, BAL-40 & BAL FZ
- Available in 250mm, 500mm and 1000mm in rolls of 30m
- Sold by the metre
- *Separation will be required if contact with non-compatible metals occurs *



SUMMARY OF COMPLIANCE WITH AS 3959-2018

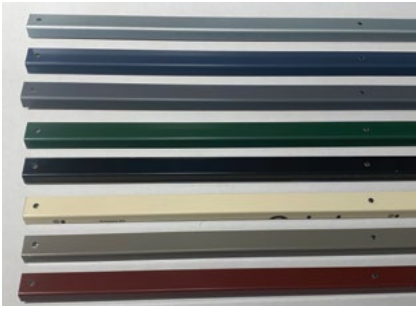
	Aluminium Gutter Mesh	HDPE (Poly) Gutter Mesh	1.9mm Aperture Aluminium Mesh	1.9mm Aperture Stainless Steel Mesh
Base Material	Commercial Grade Aluminium	High Density Poly-Ethylene	Commercial Grade Aluminium	Marine Grade 316 Stainless Steel
Aperture	3mm x 4mm	4.0mm x 4.0mm	1.9mm x 1.9mm	1.9mm x 1.9mm

Suitable as **Gutter Guard**

BAL-12.5	✓	✗	✓	✓
BAL-19	✓	✗	✓	✓
BAL-29	✓	✗	✓	✓
BAL-40	✓	✗	✓	✓
BAL-FZ	✓	✗	✓	✓

Suitable as **Ember Guard**

BAL-12.5	✗	✗	✓	✓
BAL-19	✗	✗	✓	✓
BAL-29	✗	✗	✓	✓
BAL-40	✗	✗	✗	✓
BAL-FZ	✗	✗	✗	✓



Gutter Fixing Trim

- Manufactured using 0.55 BMT BlueScope Colorbond® Steel
- Dimensions - 10 x 15mm folded at 90 degrees
- Available in 1m lengths (supplied as standard in kits)
- Folded in press brake for unmatched consistency and quality
- Pre-drilled for increased usability
- Available in full Colorbond® colour range plus copper and stainless



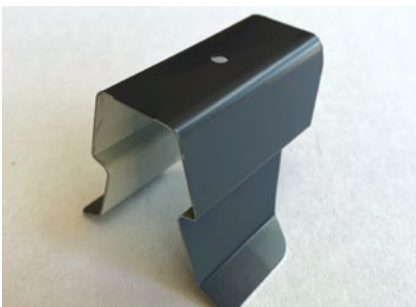
Corrugated (Corro) Roof Fixing Saddles

- Manufactured using 0.55 BMT BlueScope Colorbond® Steel
- Designed to match all major brands corrugated roof sheeting
- Pre-drilled for increased usability
- Available in full Colorbond® colour range
- Gutter install requires installation to every second rib (7 per metre)
- Valley installation requires installation on every rib (18 per metre)
- Sold individually



Trimdeck Roof Fixing Saddles

- Manufactured using 0.55 BMT BlueScope Colorbond® Steel
- Designed to match all major brands trimdek roof sheeting
- Pre-drilled for increased usability
- Available in full Colorbond® colour range
- Gutter install requires installation to every rib (6 per metre)
- Valley installation requires installation on every rib (14 per metre)
- Sold individually



Klip-Lok Roof Fixing Saddles

- Manufactured using 0.55 BMT BlueScope Colorbond® Steel
- Designed to match several deck roofing profiles
- Pre-drilled for increased usability
- Gutter install requires installation to every rib (5 per metre)
- Sold individually



Screws /Silicone

- ¼ inch, hex head, self-drilling screws
- AS 3566 Class 4/B8 coating equivalent
- Warranty up to 30 years (dependant on environment)
- Available in bags of 100 or boxes of 1000
- Supplied colour matched as standard in kits
- Available in full Colorbond® range of colours
- Roof & Gutter silicone also available

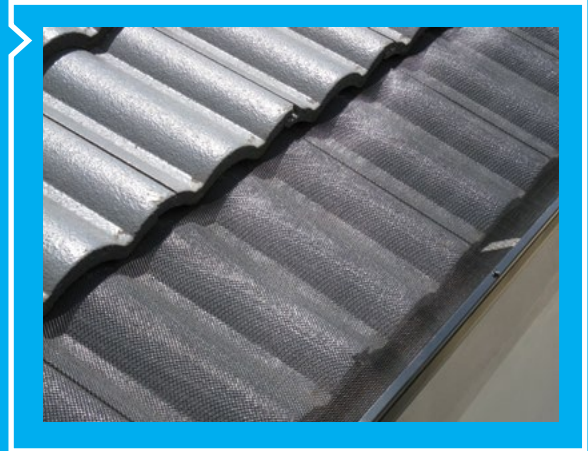


COLOUR RANGE

Mesh Colour	Standard Aluminium 500 g/m ²	1.9mm Woven Aluminium 510 g/m ²	Heavy Duty Aluminium 700 g/m ²	HDPE (Poly) 650 g/m ²
 Basalt	✓	✓		
 Bluegum	✓			
 Classic Cream	✓	✓		
 Cottage Green	✓			✓
 Cove	✓			
 Dark Brown	✓			✓
 Deep Ocean	✓	✓		
 Dover White	✓			
 Dune	✓	✓		
 Evening Haze	✓			
 Gully	✓			
 Headland	✓			
 Ironstone	✓	✓		✓
 Jasper	✓	✓	✓	✓
 Mangrove	✓			
 Monument	✓	✓	✓	✓
 Manor Red	✓	✓	✓	✓
 Night Sky	✓			✓
 Paperbark	✓	✓		✓
 Pale Eucalypt	✓	✓	✓	
 Shale Grey	✓	✓	✓	✓
 Southerly	✓			
 Surfmist	✓	✓		
 Terracotta	✓			✓
 Wallaby	✓	✓		
 Windspray	✓	✓		
 Woodland Grey	✓	✓	✓	✓
 Mill Finish	✓	✓		



i GUTTER KIT



Items included



500mm Mesh



Gutter Fixing Trim

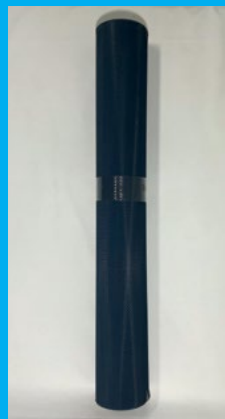


Screws to suit

i VALLEY KIT



Items included

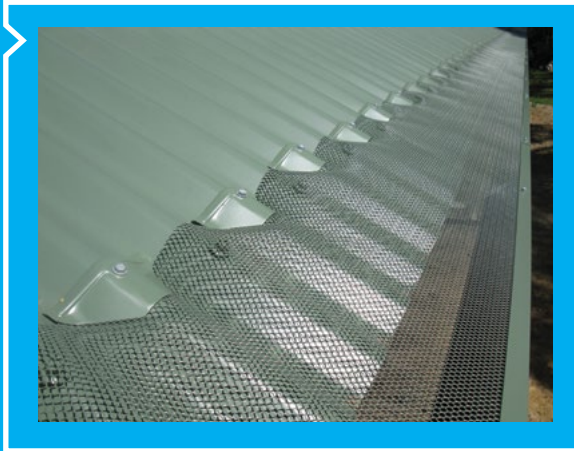


750mm Mesh



CORRO ROOF KITS

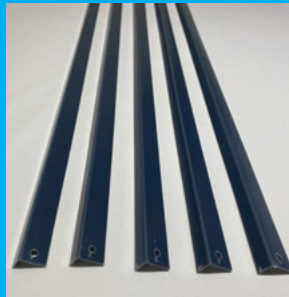
i GUTTER KIT



Items included



250mm Mesh



Gutter Fixing Trim

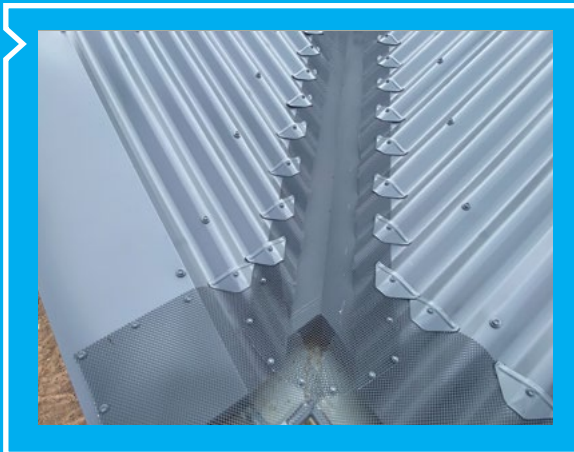


Roof Fixing Saddles



Screws to suit

i VALLEY KIT



Items included



250mm Mesh



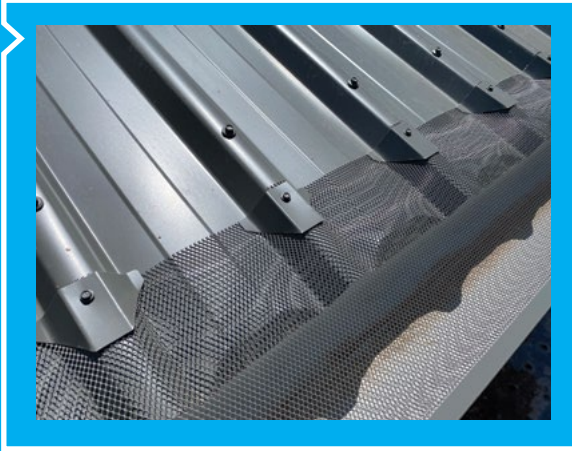
Roof Fixing Saddles



Screws to suit



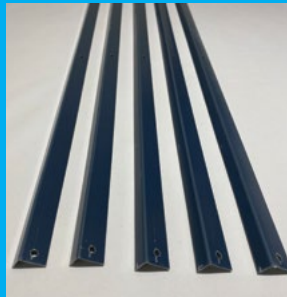
i GUTTER KIT



Items included



250mm Mesh



Gutter Fixing Trim

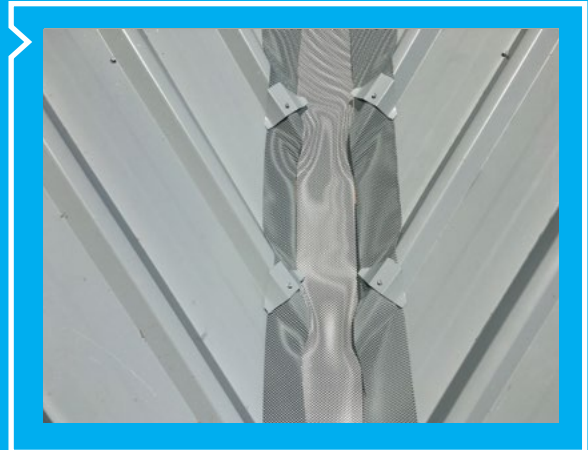


Roof Fixing Saddles



Screws to suit

i VALLEY KIT



Items included



250mm Mesh



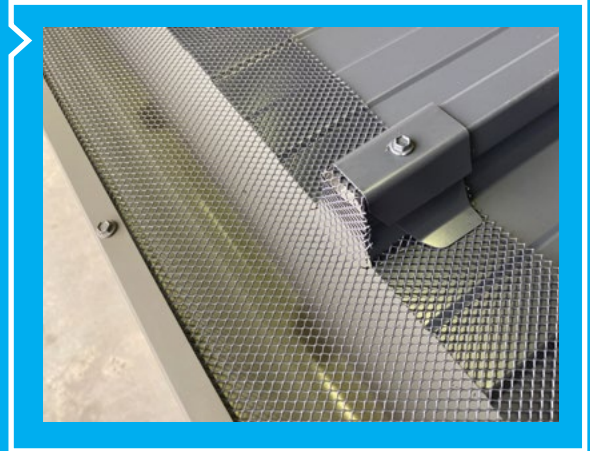
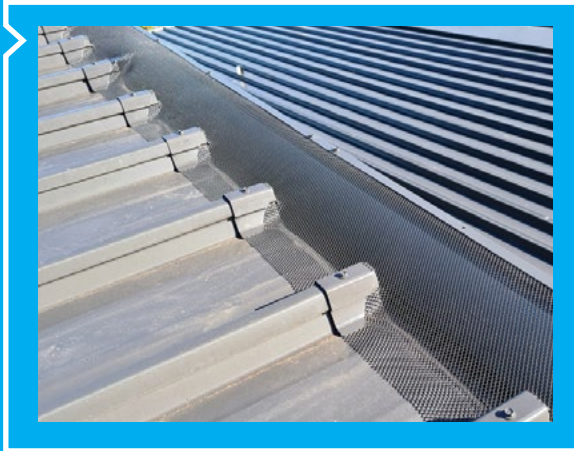
Roof Fixing Saddles



Screws to suit



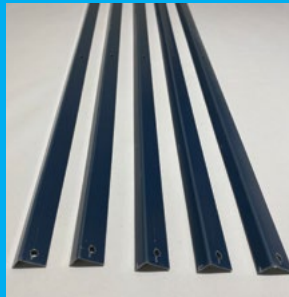
i KLIP-LOK KIT



Items included



250mm Mesh



Gutter Fixing Trim

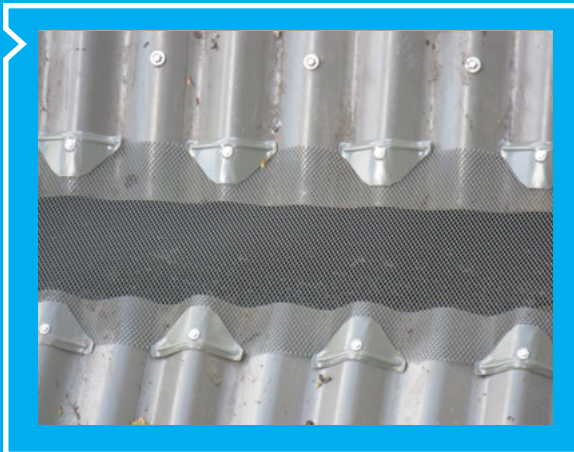


Roof Fixing Saddles



Screws to suit

i BOX GUTTER KIT



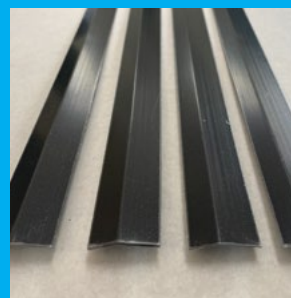
Items included



250mm Mesh



Roof Fixing Saddles



Roof Fixing Trim



Screws to suit

*Items supplied will vary based on individual requirements

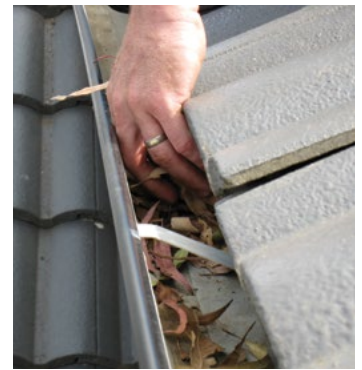


Installation of Gutter Guard is best done by a professional, however, if installing this system for the first time, please take care when working at heights. Secure all ladders and platforms, and if working from the roof, use a safety harness. Please observe all 'working at heights' regulations.

STEP #1

Nobody enjoys cleaning gutters, however it is important that all gutters, valleys and downpipes are thoroughly cleaned prior to installation. Clean and clear all debris and flush gutters and downpipes as needed.

Cleaning gutters



STEP #2

After the gutters are clear, secure the mesh to the gutter's outer edge using a Colorbond® trim and screws. Gutter fixing trims are supplied predrilled to ensure fasteners are located at 250mm intervals. Overlap trims at joins and use 1 screw to secure and provide uniformed finish.

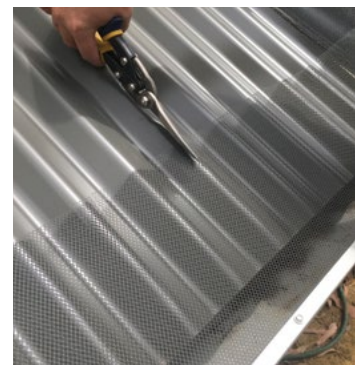
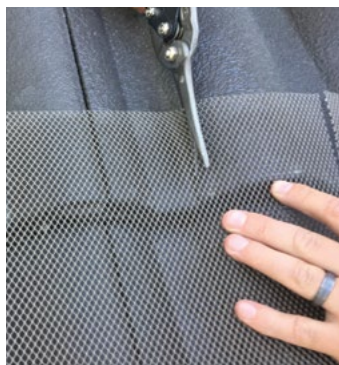
Attaching the mesh to the gutters



STEP #3

Strategically positioned relief cuts need to be made in the guttermesh, coinciding with the contours of the roof. This fabricating process helps the mesh shape to the roof profile and ensures a professional finish.

Fabricating the mesh to the roof profile





INSTALLATION PROCEDURE



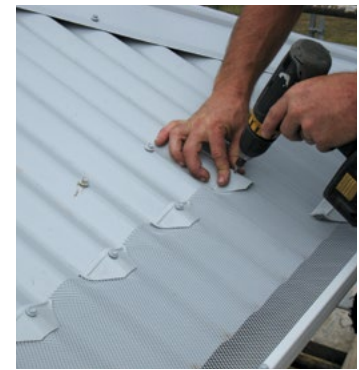
The information provided on this page is a guide only. If unclear on any step, please contact us for further assistance.

Scan the code for full installation videos or find them at www.karben.com.au

STEP #4

On tiled roofs the second row of tiles need to be lifted slightly and the gutter mesh tucked underneath. On a Colorbond® roof, specifically designed clips are screwed into the roof to hold the mesh down firmly against the corrugations.

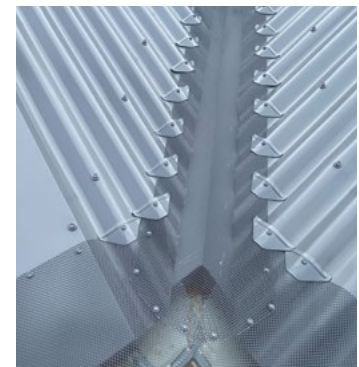
Attaching the mesh to the roof



STEP #5

Uniquely our products are adaptable to roof valleys. The mesh extends over the valley gutters ensuring that from end to end and top to bottom your roof gutters are protected. See www.karben.com.au for more details.

Covering the valleys



STEP #6

The final step in the installation process is securing the mesh around the hips and gables. For tile roofs high quality roof and gutter silicone should be used to fasten the mesh to the ridge capping so that no leaves can get in anywhere. For metal roofs, ensure mesh is fitted securely to capping and flashing where required.

Securing around hips and gables



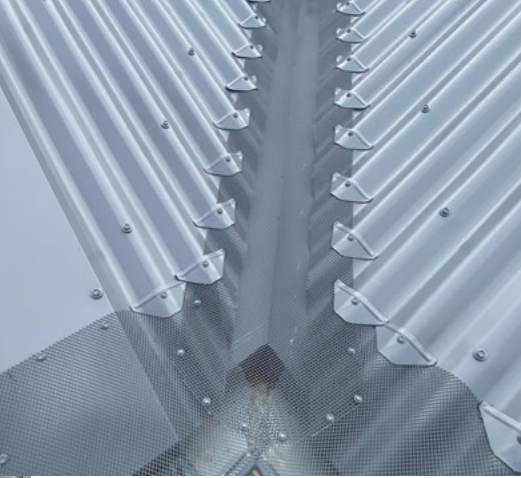
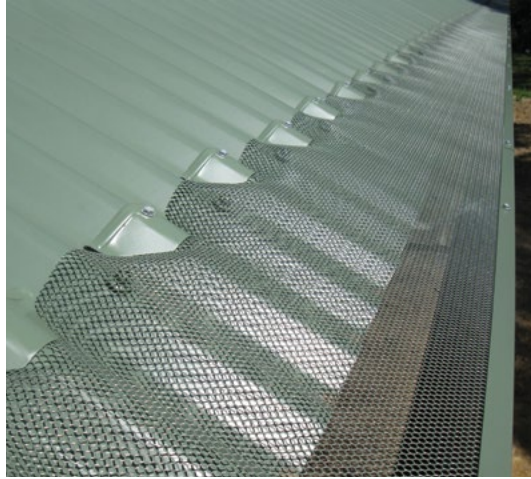


- ✓ Sold by the metre – no wastage.
- ✓ Maximum length is 50m – eliminates joins.
- ✓ No need to hold stock, fast delivery service Australia wide.
- ✓ Karben Guard Kits include mesh, trim, saddles, and painted head screws as required.
- ✓ Components available separately.
- ✓ All accessories are made from BlueScope Colorbond® 0.55 BMT.
- ✓ 15-year warranty on Aluminium. 10-year warranty on Plastic.
- ✓ Same day dispatch for orders placed by 12 Noon.
- ✓ Goods sent in sturdy, attractive packaging.
- ✓ Point of sale brochures, signs and displays available.



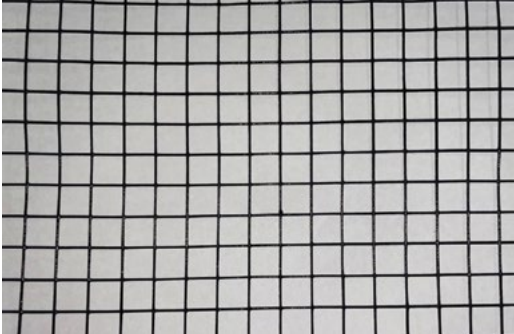


GUTTER GUARD GALLERY



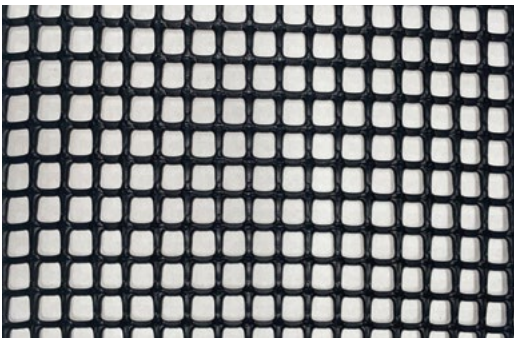


Stainless Steel Vermin Mesh



- PVC Coated, Stainless Steel Mesh (SS304)
- Aperture of 12.5mm x 12.5mm
- Strand thickness 1.0mm
- Mesh weight 560 g/m²
- Manufactured in 200mm x 30m continuous rolls
- 6 Year Guarantee
- Able to be installed without compromising solar panel warranty

HDPE (Poly) Vermin Mesh



- High Density Polyethylene (Poly) Mesh
- Aperture of 10mm x 10mm
- Strand thickness 3mm
- Mesh weight 810 g/m²
- Manufactured in 225mm x 30m continuous rolls
- 6 Year Guarantee
- Able to be installed without compromising solar panel warranty

Nylon Attachment Hooks & Washers



- UV stabilised commercial grade nylon
- Sold in bags of 100
- No screwing into panel frame
- Does not void solar panel warranty

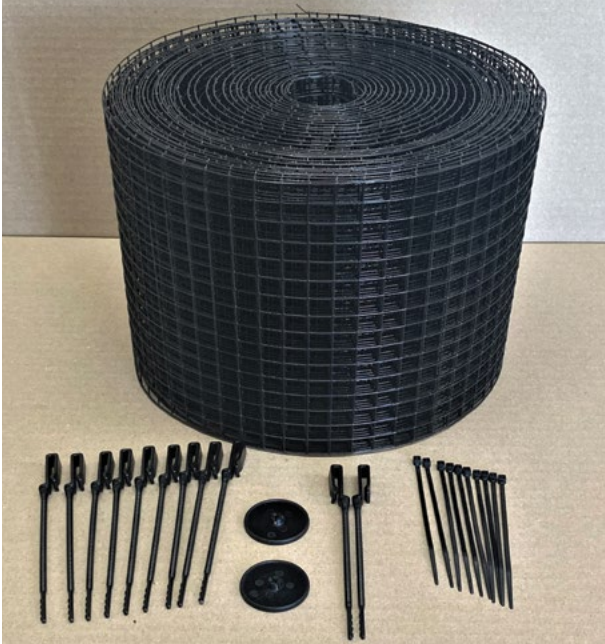
Stainless Steel Attachment Hooks & Washers



- Commercial grade stainless steel
- Sold in bags of 100
- No screwing into panel frame
- Does not void solar panel warranty



30m Karben Solar Panel Kits



Karben Solar Guard DOES NOT compromise or void your solar panel system warranty, unlike many other methods which are considered 'unauthorised modifications' to your solar panel system.

Solar panel kits contain the following items

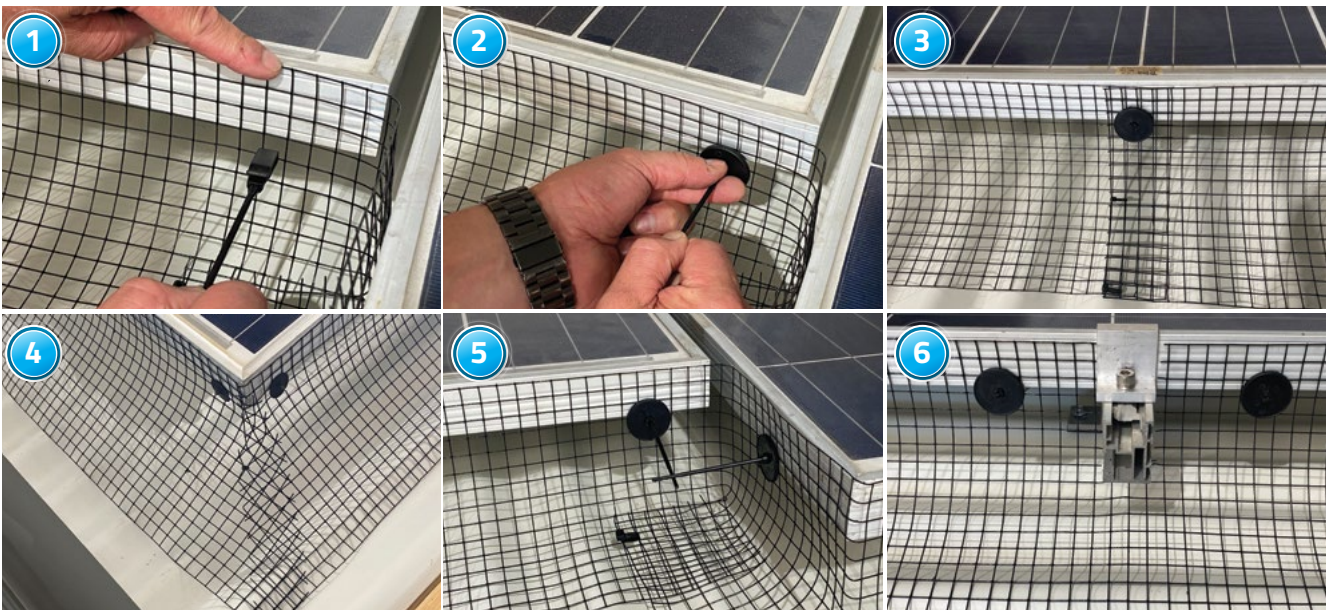
- 1 x 30m roll of Karben vermin mesh
- 100 x solar panel mounting hooks
- 100 x solar panel locking washers
- 20 x cable ties
- Free delivery Australia wide

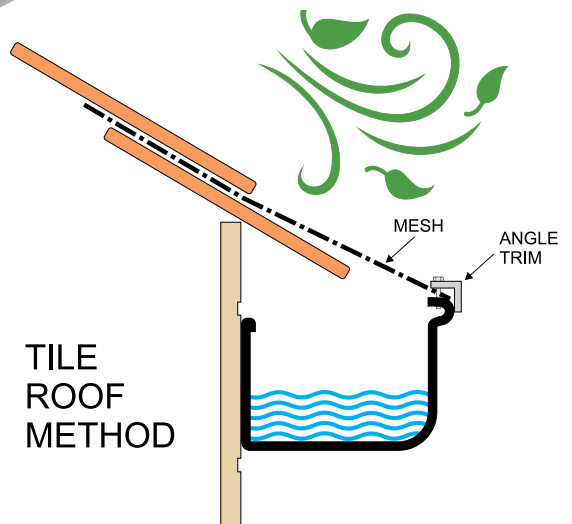
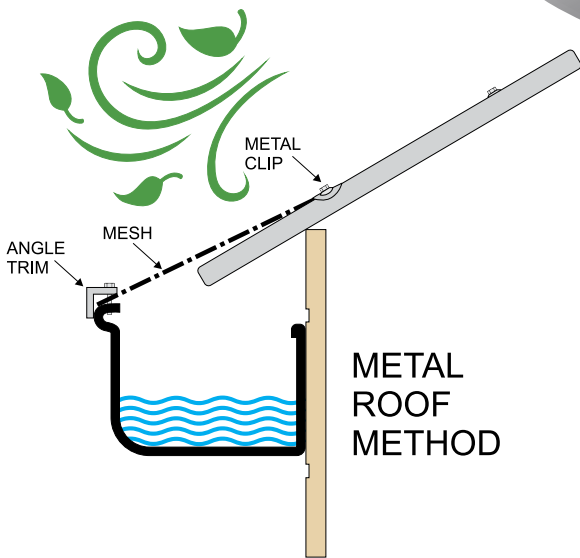
Each kit is available in your choice of

- Stainless Steel or HDPE vermin mesh
- Nylon or stainless steel hooks and washers



SCAN THE CODE FOR FULL
INSTALLATION INSTRUCTIONS





Karben Industries Pty Ltd
Unit 1, 3 Palm Tree Road
Wyong NSW 2259
Telephone: 1300 527 236
Email: info@karben.com.au



www.karben.com.au